





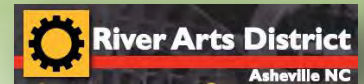
## Purpose and Need

The primary purpose of the project is to improve the transportation infrastructure and the multimodal system linkages along Lyman Street and Riverside Drive between Amboy Road and Hill Street which contains the River Arts District.

The secondary purpose of the project is to address the social demands to provide access to the riverfront and the revitalizing River Arts District as manifested in the various plans that culminated in the Wilma Dykeman RiverWay Master Plan and other ongoing planning activities.

## Goals

- ❖ Implement previous plans (City of Asheville 2025 Plan, Wilma Dykeman RiverWay Master Plan and other City plans)
- ❖ Create a Unique Gateway for the City of Asheville
- ❖ Connect adjacent neighborhoods and downtown to each other and the French Broad River
- ❖ Promote Smart Growth, including Mixed Use and a Range of Housing Options in the River Arts District
- ❖ Increase Multi-Modal Transportation Choices – transit, bike, pedestrian and river access
- ❖ Enhance Economic Competitiveness and Sustainable Redevelopment
- ❖ Provide Recreational Opportunities for Residents and Tourists
- ❖ Improve Environmental Protection and Water Quality of the French Broad River
- ❖ Develop Opportunities for Streetscape, Amenities and Public Art



## CHRONOLOGICAL LOG OF SIGNIFICANT EVENTS - PROJECT HISTORY



Project Team Kickoff - June 22, 2010

Begin Existing Conditions Investigation & Due Diligence

Study Area Tour with RiverLink – August 18, 2010

Steering Committee Meeting #1 - September 21, 2010

Advisory Committee Study Area Tour - September 29, 2010

Stakeholder Interviews – including September 30, October 1, 20 and December 8, 2010

Complete Existing Conditions Reports – November 2010

Develop Preliminary Corridors and Cross Sections – November 2010

Steering Committee Meeting #2 – December 8, 2010

Project Updates to local boards, commissions, organizations – On-going

Public Meeting # 1 – January 22, 2011



Photo Credits: RIVERLINK





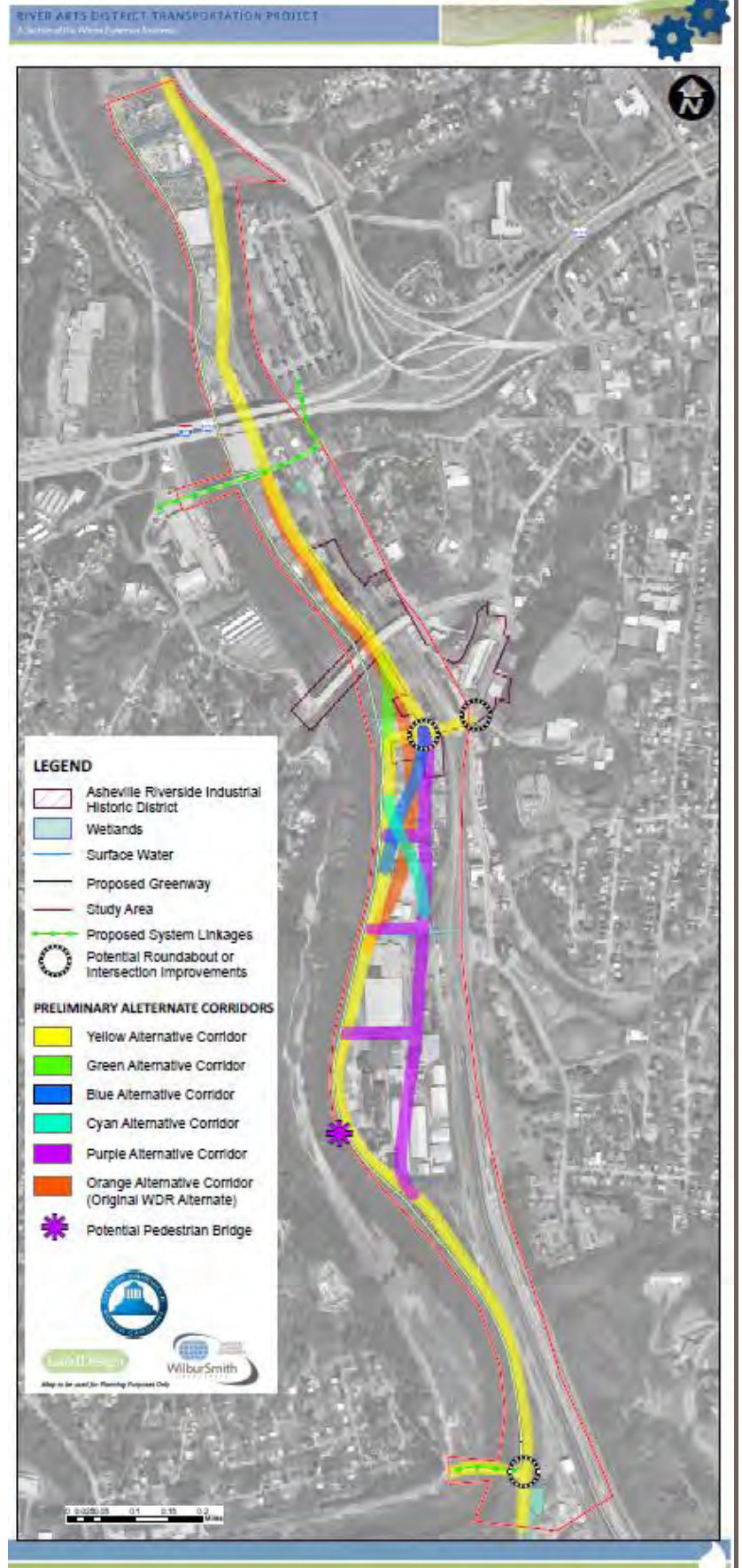
## Proposed Alternative Corridors

The Project Team, which includes members of the City of Asheville, NCDOT and the steering committee has developed several concepts and potential improvements which could be incorporated into the development of the alternatives. The following alternative corridors are developed to obtain feedback :

1. Yellow Alternative Corridor
2. Green Alternative Corridor
3. Blue Alternative Corridor
4. Cyan Alternative Corridor
5. Purple Alternative Corridor
6. Orange Alternative Corridor

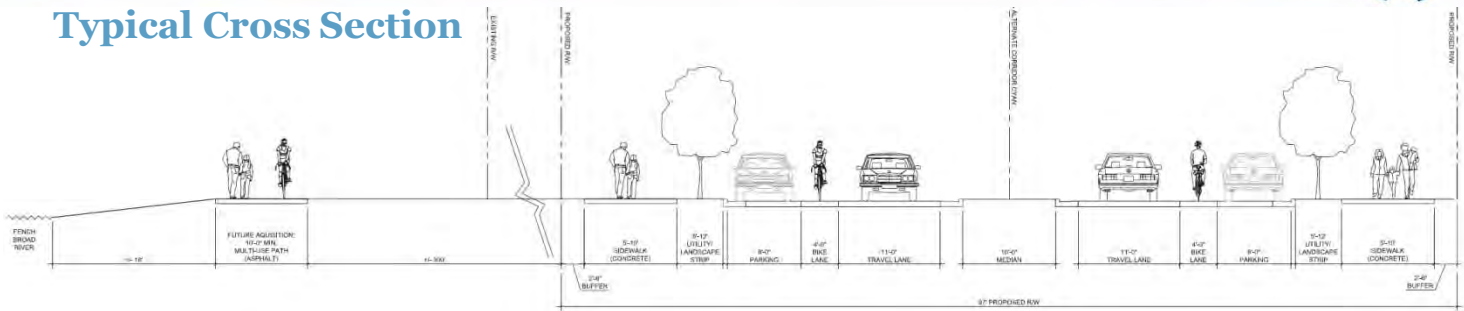
### Other potential TRANSPORTATION improvements in the study area include:

- ❖ French Broad River Greenway - East segment
- ❖ Bike Lanes, Sidewalks, Transit Stops and River Access Points
- ❖ On-Street Parking
- ❖ Potential Roundabout at the Five Points intersection
- ❖ Potential Roundabout at the Amboy/Riverside intersection
- ❖ Reconfiguration of the Riverside Drive / Lyman Street intersection
- ❖ Potential Re-alignment of Lyman Street
- ❖ New Pedestrian / Bike only Bridge crossing French Broad River
- ❖ Amboy Bridge Replacement
- ❖ Bike / Pedestrian Access to/from RiverLink Bridge to French Broad River





## Typical Cross Section



## Public Involvement Process

1. **Primary Partners** include key agencies that will play a role in funding or implementing the plan such as NCDOT.
2. **Steering Committee** is made up of City Staff, RiverLink and NCDOT.
3. **Advisory Committee** consists of a range of civic and community leaders and advocates.
4. **Stakeholders** represent property owners, artists, businesses and community groups within or adjacent the study area
5. **Public**

## Your comments are welcome

We wish to thank you for participating in today's workshop. Your comments are very important during this initial stage of the River Arts District Transportation Project. Please provide your input and feedback on :

- Potential corridors
- Environmental and community features
- Project goals and purpose and need

Please use the comment forms to make any comments or inquiries. Feel free to leave the comment forms with the project team today at the registration table or mail them by **February 23, 2011** to:

**Stephanie Pankiewicz, RLA, ASLA**

**LandDesign | Asheville NC**

One Page Avenue - Suite 220, Asheville NC, 28801

Telephone: 828.281.1447

or forward via email to:

[SPankiewicz@landdesign.com](mailto:SPankiewicz@landdesign.com)



## What's Next?

For project updates, please visit the City's project website at:

[http://ashevilenc.gov/residents/transportation/transportation\\_planning/default.aspx?id=23772](http://ashevilenc.gov/residents/transportation/transportation_planning/default.aspx?id=23772)

Receive Comments - February 23, 2011

2<sup>nd</sup> Public Meeting - Summer 2011

Complete Study - March 2012



Photo Credits: Wilma Dykeman's family album